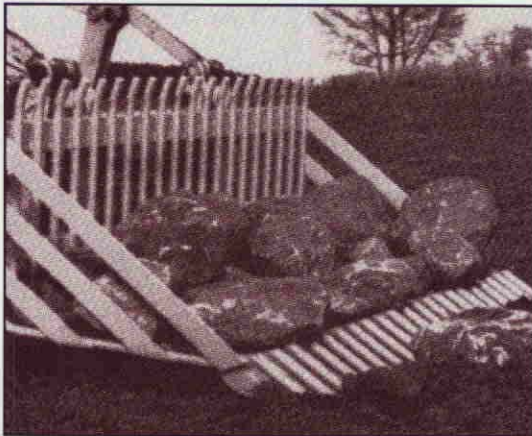


STONE FORKS

Our stone forks are made from a special high strength, low alloy steel. They are available in eight sizes with two different tine spacings to suit different screening requirements.

The job of stone picking is much more efficient when using the PRECISION stone forks. Our forks are designed to fit on front end loaders, skid steers and industrial rubber tired loaders and each is available with universal mounting plates (except 235 & 240).

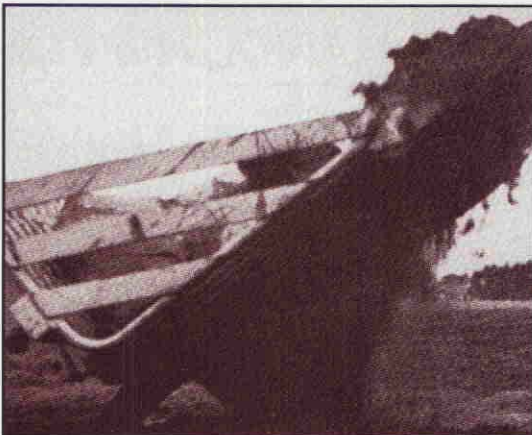


COLLECT...

The bent fork tines form a collection area at the front of the stone bucket. The tips of the tines are slightly lower than the collection area at the back of the bucket. While the bucket is level the stones can be collected without the container unit coming in contact with the ground.

FILL...

The ridge between the tine tips and the container unit prevents collected stones from falling out while new ones are being collected.

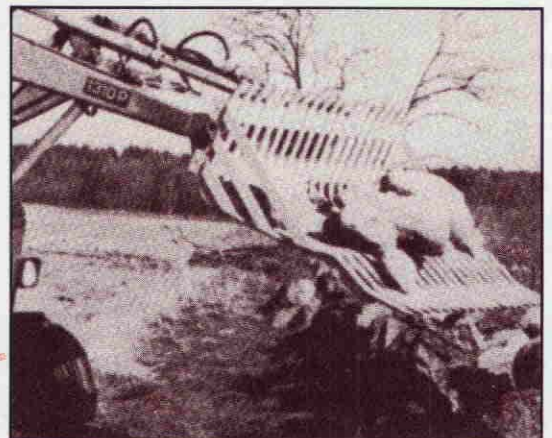


SHAKE DOWN...

A rapid movement with the bucket cylinder causes the stones to fall into the container unit and shake off excess soil.

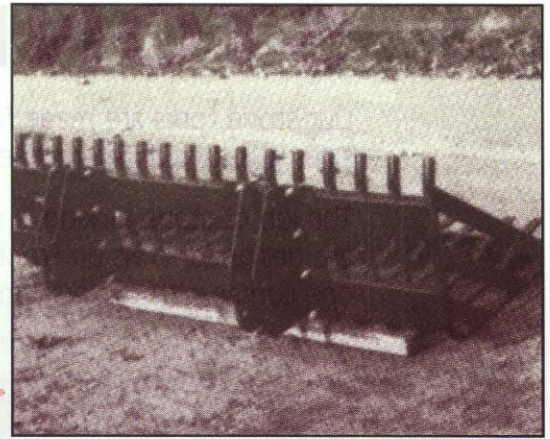
DUMP...

When the bucket is full it can then be dumped into a trailer or on a stone pile.



The correct combination of Stone Fork and Loader gives the best results.

The capacity of the Stone Fork is utilised to the fullest when it is the correct size in relationship to the machine weight. Select a Stone Fork which is so wide that the outermost tines are visible at the side of the tractor hood.



NOTE: Our Stone Forks are not designed for breaking loose embedded boulders.

MODEL	OPERATIVE WIDTH	DEPTH	HEIGHT	TINE SPACING	WEIGHT	TINE DIAMETER
S135N/80	53"	39"	20"	3.15	420#	1-3/16"
S135N/50	53"	39"	20"	2.00	520#	1-3/16"
S160N/80	62"	39"	20"	3.15	480#	1-3/16"
S160N/50	62"	39"	20"	2.00	600#	1-3/16"
S190N/80	75"	39"	20"	3.15	570#	1-3/16"
S190N/50	75"	39"	20"	2.00	710#	1-3/16"
S215N/80	84"	39"	20"	3.16	630#	1-3/16"
S200N/80	78"	47"	28"	3.06	1122#	1-3/8" - 1-5/8"
S205N/80	84"	47"	28"	3.06	1180#	1-3/8" - 1-5/8"
S235N/80 (no brackets)	90"	57"	31"	3.06	1275#	1-3/8" - 1-5/8"
S240N/80 (no brackets)	96"	57"	31"	3.06	1350#	1-3/8" - 1-5/8"

MOUNTING BRACKETS...

We manufacture quick attach brackets to suit most types of loaders. Please specify make and model when ordering.

AVAILABLE AT:



PRECISION INDUSTRIES GUELPH LTD.

RR 3, Box 3613, Guelph, Ontario, Canada N1H 6P1 • Phone: 519-763-2400 • Fax: 519-763-3930